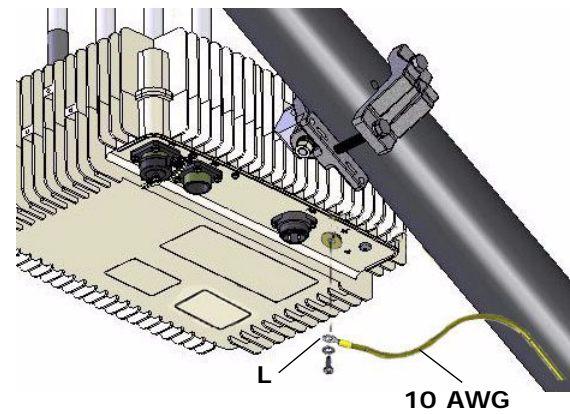


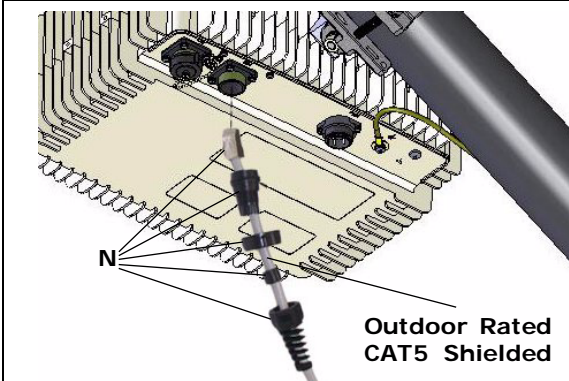
(8) Ground the NetPoint Pro 6x2.4 Unit

Note: Connect the 10 AWG grounding cable before connecting any other cables. When removing the NetPoint Pro 6x2.4, the grounding cable should be the last cable removed.

Noter: Connecter la prise de terre 10 AWG avant de connecter tout autre câble. Pendant la désinstallation du NetPoint Pro 6x2.4, la prise de terre doit être le dernier câble retiré.

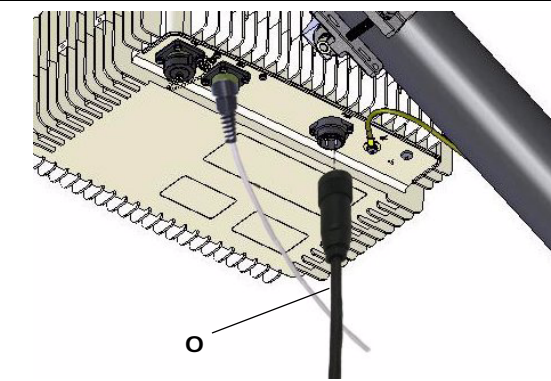


(9) Connect Ethernet Cable

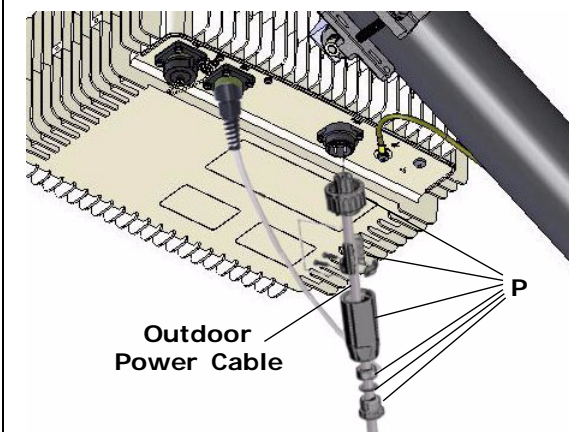


Note: Only required for gateways.

(10) Connect Power Cable



Optional – Connect Power Connector with Field Wiring








Power Cable Pinout

Pin #	Signal
1	100-240VAC Line
2	Neutral
3	No connection
⊕	Ground

Components included in the package

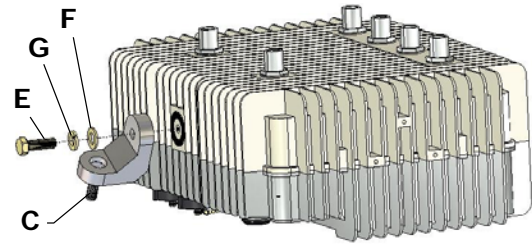
A Wall/Pole Bracket	B Clamping Bracket	C 'L' Adapter	D Hex Bolt M8x70	E Hex Bolt M8 x25	F Flat Washer M8
 x1	 x1	 x1	 x2	 x1	 x3
G Spring Washer M8	H Nut M8	I 2.4GHz Antenna	J 5 GHz Antenna		
 x4	 x1	 P/N: NPP-ANT-2407S x4	 P/N: NPP-ANT-5810 (5.8Ghz) or P/N: NPP-ANT-5410 (5.4Ghz) x1		
K Third Band Antenna			L Antenna Support Plate	M Solderless Ring Terminal	
 P/N: NPP-ANT-5410 (5.4Ghz) or P/N: NPP-ANT-4910 (4.9Ghz) x1			 x1	 x1	
N Sealed RJ45 Connector	O Power Cable	P Power Connector	Q Console Cable		
 x1	 x1	 x1	 x1		

Additional tools and components provided by the customer

R Stainless Steel Hose Clamp 0.5" (13mm) width (size is based on diameter of pole)	S Hex Bolt 3/16" (5mm) + Fastener (appropriate for the material of the wall)	T Combination Wrench (13 mm)	U Slotted Screwdriver 1/8" (3mm) wide	V RJ45 Crimp Tool
 x2 Note: Only required when mounting to poles larger than 3".	 x4 Note: Only required for wall mounting.			

Installation Procedure

(1) Assemble the 'L' Adapter to the NetPoint Pro 6x2.4 Unit

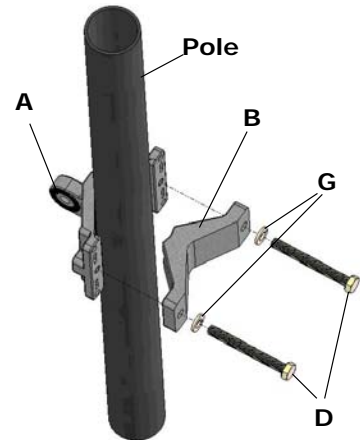


(2) Install the Mounting Brackets

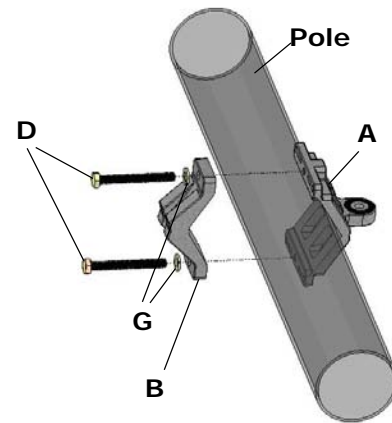
Note: When mounting the NetPoint Pro 6x2.4, the pole or wall mounting must support a minimum of 61.6 lbs (28 kg). In addition, the pole or wall mounting must support the wind loads from the NetPoint Pro 6x2.4. For example, the wind load at a wind velocity of 100 mph (160 km/h) is 24.2 lbs (11 kg) and the wind load at a wind velocity of 165 mph (264 km/h) is 66.1 lbs (30 kg).

Noter: Lorsque vous montez la NetPoint Pro 6x2.4, le poteau ou le montage mural doit supporter d'un minimum de 61.6 lbs (28 kg). En outre, le montage sur le poteau ou sur le mur doit appuyer les surcharges dues au vent de la NetPoint Pro 6x2.4 (par exemple, 24.2 lbs (11 kg) pour la vitesse du vent de 100 mph (160 km/h), 66.1 lb (30 kg) pour l'énergie éolienne Vitesse de 165 mph (264 km/h)).

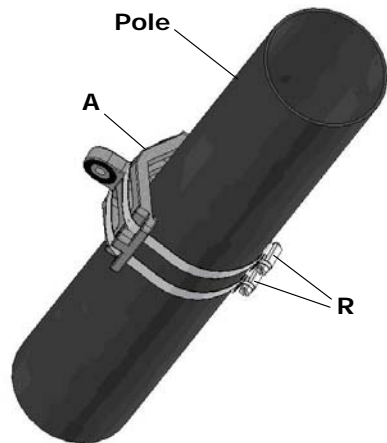
(2A) Narrow Pole (1"-1.75" diameter)



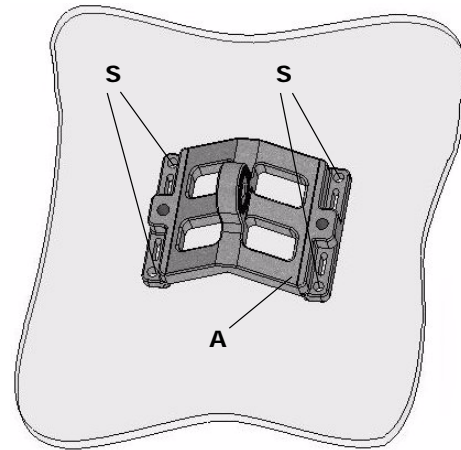
(2B) Normal Pole (1.75"-3" diameter)



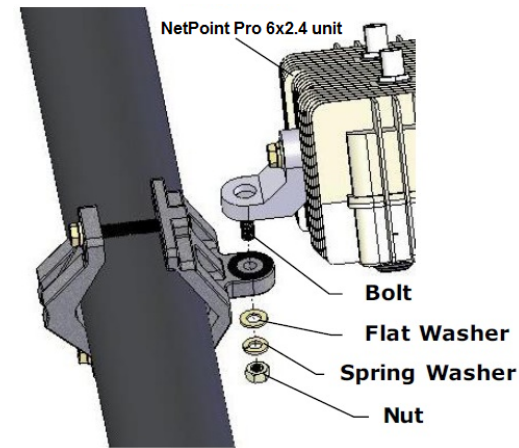
(2C) Large Pole (larger than 3" diameter)



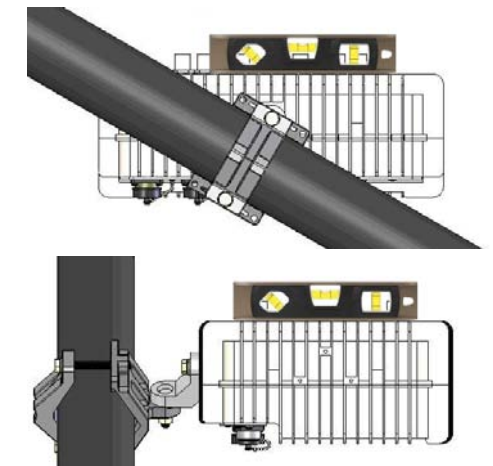
(2D) Wall Mounting



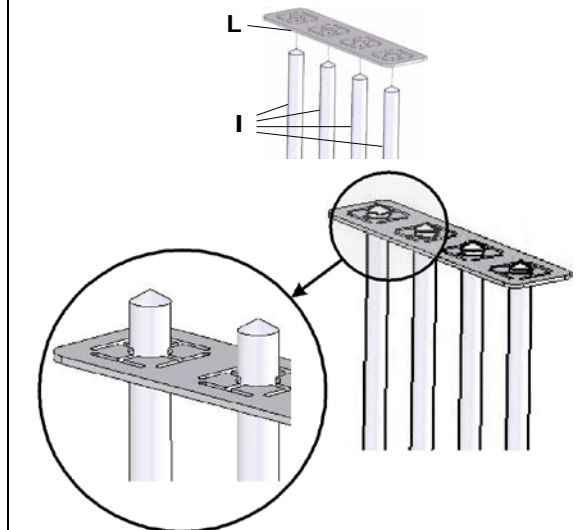
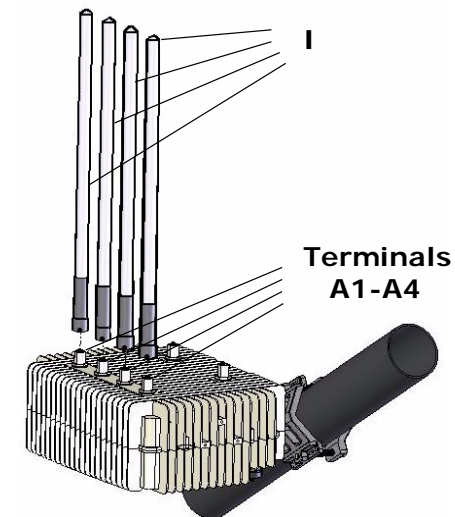
(3) Mount the NetPoint Pro 6x2.4



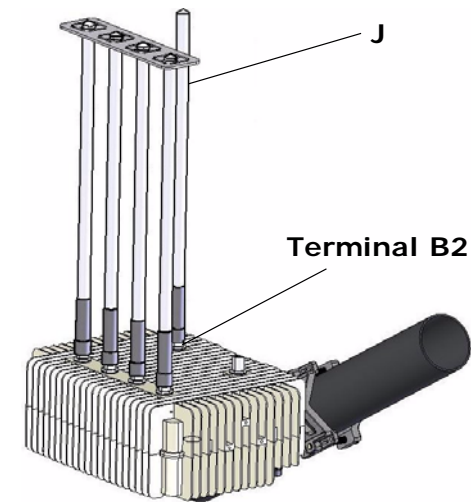
(4) Level the NetPoint Pro 6x2.4



(5) Mount the 2.4 GHz Antennas



(6) Mount the 5 GHz Antennas



(7) Mount Third Band Antenna

